

APPLICATIONS

BEGM SERIES

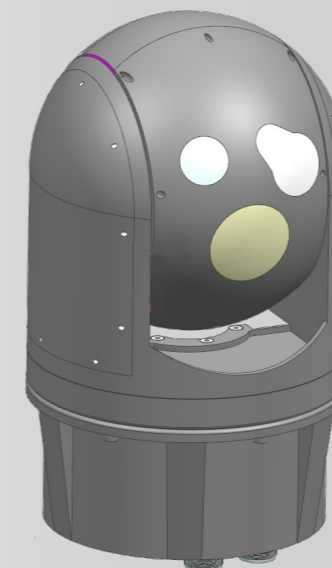
- UAV reconnaissance
- Infrastructure Inspection
- Search & Rescue operations
- Traffic Surveillance
- Coastal and Border Surveillance
- Anti-Terrorist and Law Enforcement
- Anti-Smuggling Surveillance
- Fire Control / Spotting
- Maritime surveillance

BEGMY SERIES

- Antenna Positioning
- Gyro Calibration
- Weapon Positioning
- Auto Tracking
- Sensor Calibration
- Missile Seekers
- Electro Optics Testing

CAPABILITIES

- Precise control of position, speed, and acceleration
- MIL Qualified
- Ruggedised design to operate in extreme environment conditions
- User-programmable ranges of motion
- Real time video sensor Fusion
- Target Geo-localisation
- Auto Tracker Integration
- Adaptive Detail Enhancement
- Long Range Eye Safe Laser Range Finder



GIMBALS



Scan to goto product page

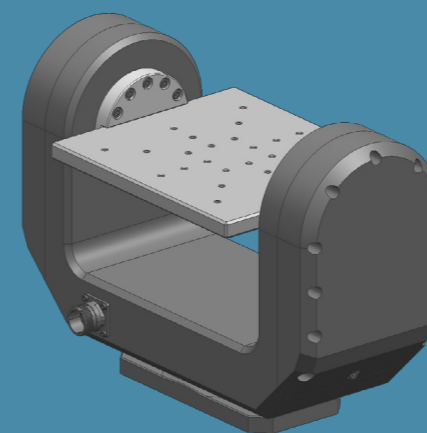
SYSTEM

BEGM is designed for multi-sensor gyro stabilised long range electro-optical payloads for land forces, airborne and maritime applications. The payloads can feature a cooled MW IR thermal imager, low light CCD camera, laser range finder and optionally a laser designator for surveillance, reconnaissance, target acquisition and target designation.

BENENGG DESIGN & MANUFACTURING Pvt Ltd.

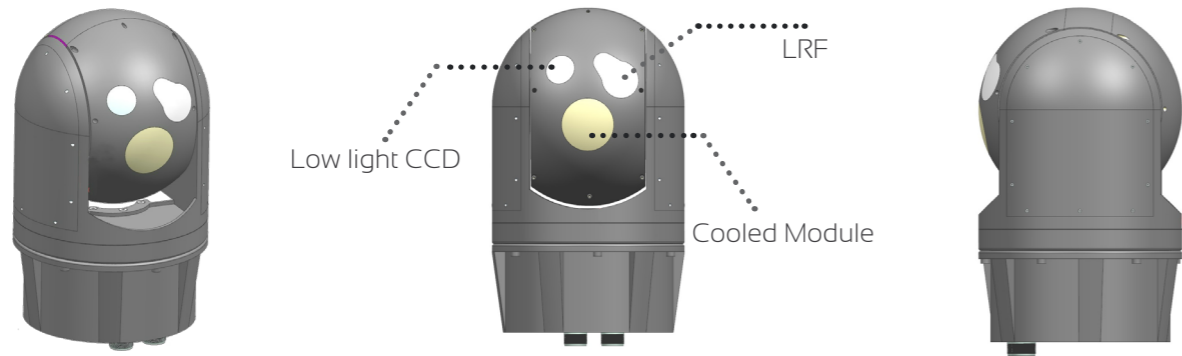
No: 79/9-2, 2nd Floor, 8th Cross,
Shankarappa Garden, Magadi Road,
Bangalore Karnataka 560023.

Ph: +91 80 23384933
Fx: +91 80 23384944

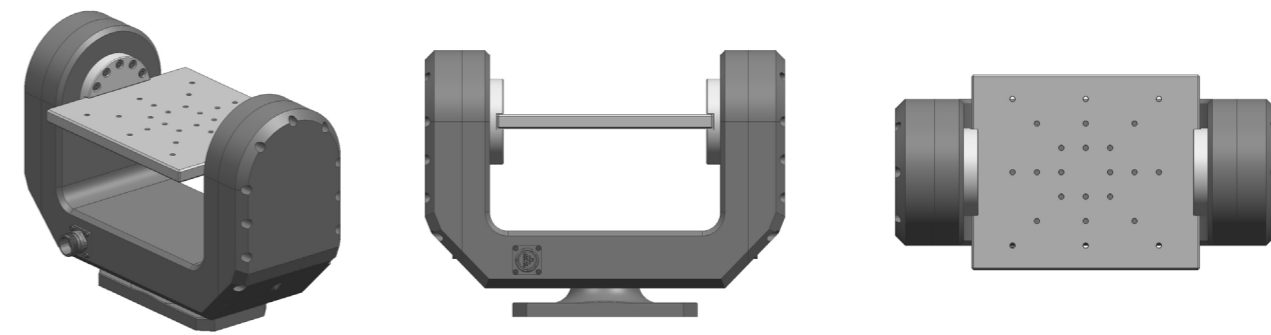


RELIABLE
ROBUST
ACCURATE
DURABLE
ULTRA PRECISE
QUALITY
LOW WEIGHT
COMPACT

BEGM400D



BEGM400Y



INTRODUCTION BEGM400

BEGM400 series is light weight gimbals designed for light weight UAV platforms. It can be used in applications which can take Short Range, Medium Range and Long range payloads to provides surveillance or monitoring ability in darkness, smoke, haze, rain, fog and other hazardous situations.

INTRODUCTION BEGM400Y

BEGM400Y gimbals provide ULTRA PRECISION angular positioning with user programmable rate and acceleration. These Systems are designed for Mission Critical Positioning of Optics or Lasers or other sensors at high speeds. Y- series gimbals can also be used to calibrate and test wide range of sensors.

*SYSTEMS SPECIFICATIONS	
TYPE	Gyro Stabilised
DIAMETER	280mm
ELEVATION RANGE	+30° to -90°
AZIMUTH RANGE	360° x N
ACCURACY	UPTO 0.3 µrad
PAYLOAD	40 Kg
STABILISATION	Upto 30 µrad
TILT LIMIT	Programmable
INPUT VOLTAGE	24V DC
PROTECTION CLASS	IP 66
OPERATING TEMPERATURE	-50° C to +60° C
INTERFACE	RS 232 / RS 422 / Ethernet
BODY	Precision Machined Aluminium Alloy
JOYSTICK	✓
WIRELESS COMMUNICATION	✓
SOFTWARE GUI	✓
DMC	✓
SURFACE	Powder Coat / Anodising / Epoxy Coat

BEGM series gimbals can be designed and customised to your requirement. The payload housing can be adapted to accommodate a variety of, sensor, camera or antenna payloads.

Our gimbals achieves gyro stabilised precise motion and position accuracy with on board DSP processor and highly accurate drives. This systems are designed to operate in Extreme Environment Conditions.

PAYLOAD

- EO IR SENSORS
- THERMAL SENSOR
- DAY SENSOR
- LASER RANGE FINDER
- LASER ILLUMINATOR
- EYE-SAFE LASER RANGE FINDER
- ANTENNA

BEGMY series gimbal provide Dual Axis, Azimuth Continuous with Slip Ring and limited Elevation range. With our Superior mechanical design these system can operate in Extreme Environment conditions

BEGM400Y Series system can take payload upto 40 Kg, and achieve critical position accuracy upto 0.3 µrad. Our System can accommodate variety of payloads and be customised for different mounting options.

PAYLOAD

- MISSILE SEEKERS
- ELECTRO OPTICS SENSORS
- GYROS
- WEAPON
- ACCELEROMETERS
- ANTENNA
- TELESCOPE

*SYSTEMS SPECIFICATIONS	
ELEVATION RANGE	+30° to -90°
AZIMUTH RANGE	360° x N
ACCURACY	UPTO 0.3 µrad
PAYLOAD	40 Kg
AZIMUTH RATE	120° /sec
ELEVATION RATE	120° /sec
TILT LIMIT	PROGRAMMABLE
INPUT VOLTAGE	24V DC
PROTECTION CLASS	IP65 / IP67
OPERATING TEMPERATURE	-40° C to +60° C
INTERFACE	RS 232 / RS 422 / Ethernet
BODY	Precision Machined Aluminium Alloy
JOYSTICK	✓
WIRELESS COMMUNICATION	✓
GYRO	✓
SOFTWARE GUI	✓
DMC / GPS	✓
SURFACE	Powder Coat / Anodising / Epoxy Coat